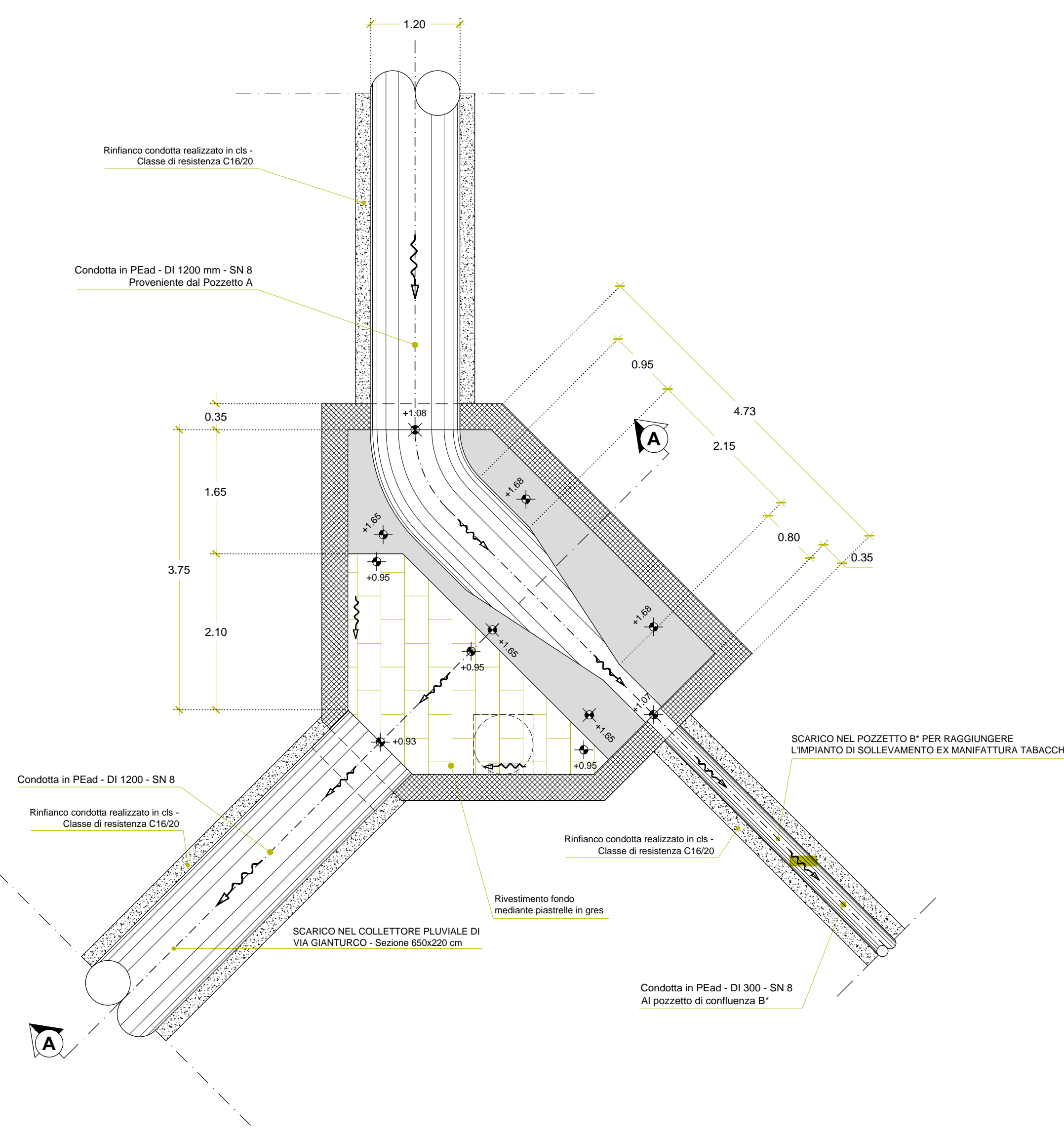


MANUFATTO PARTITORE POZZETTO B

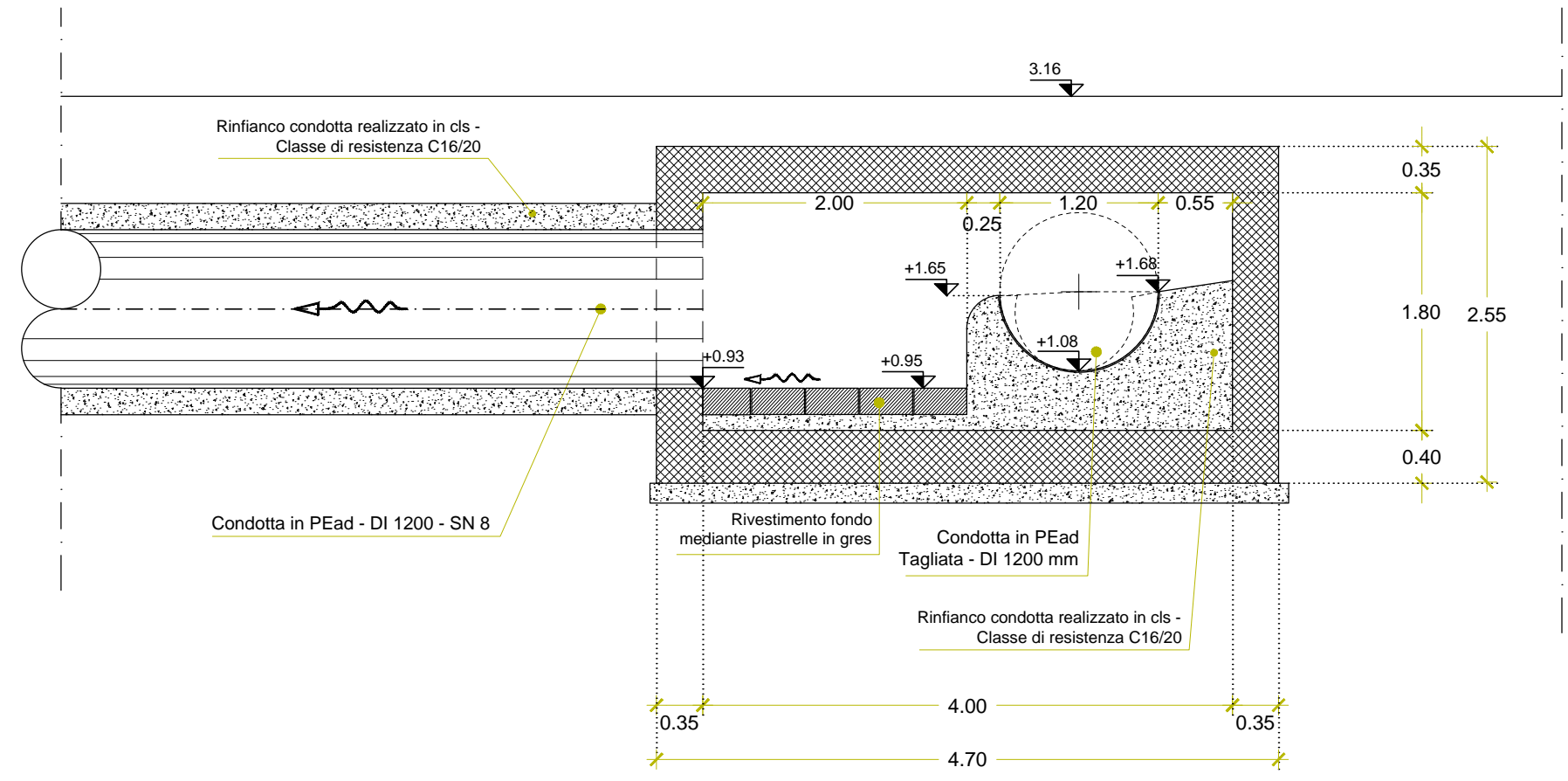
PLANIMETRIA CON VISTA QUOTE SCORRIMENTO

Scale 1:50



SEZIONE VERTICALE A-A

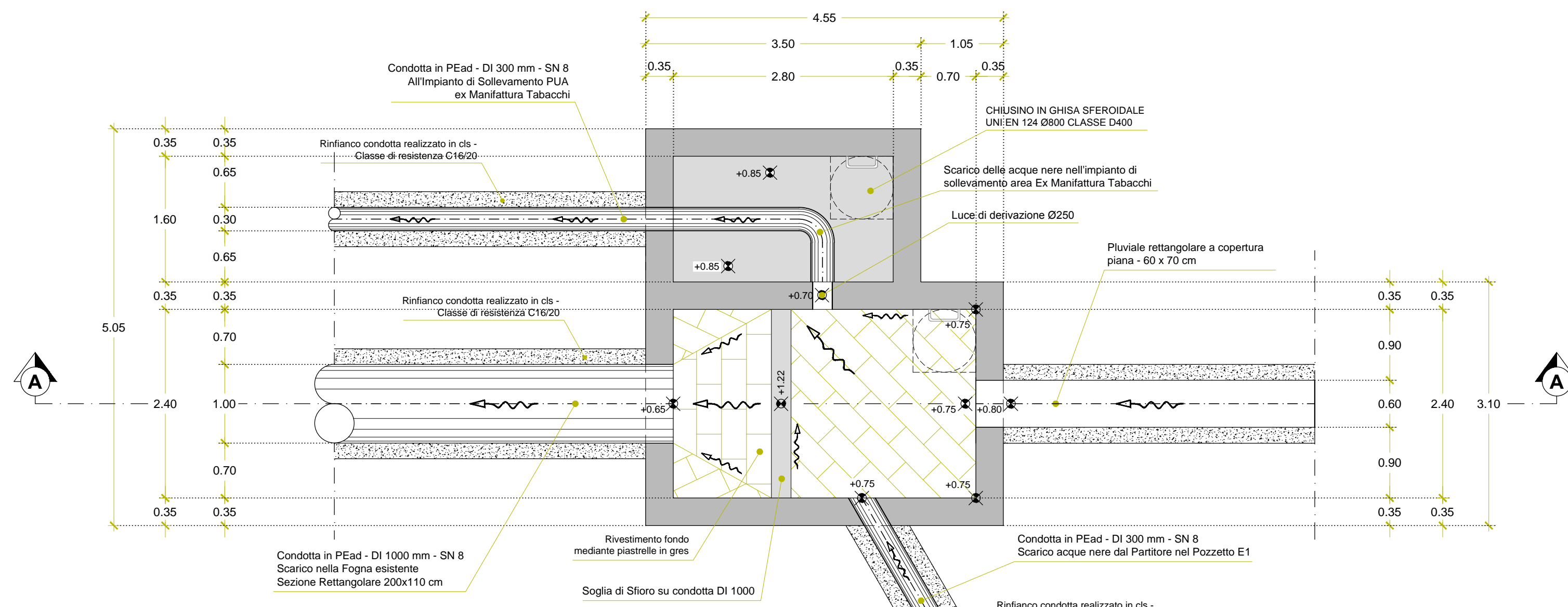
Scale 1:50



MANUFATTO PARTITORE POZZETTO E

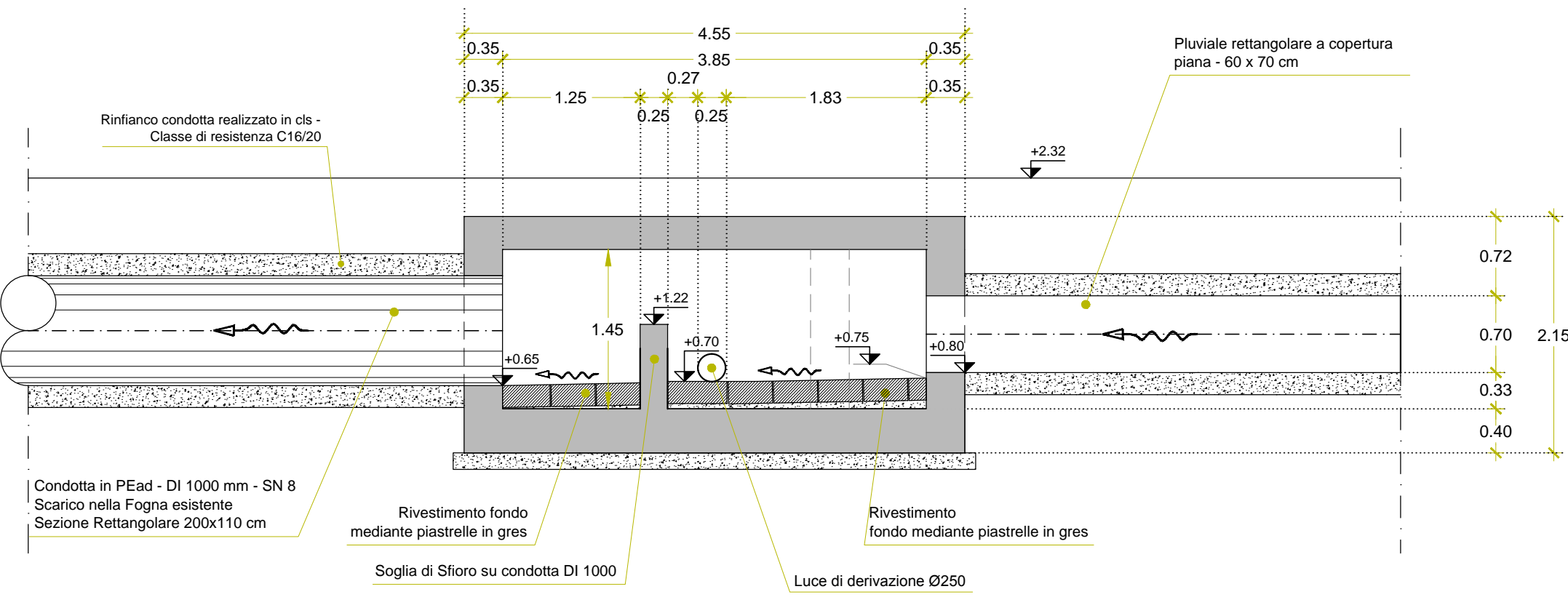
PLANIMETRIA CON VISTA QUOTE SCORRIMENTO

Scale 1:50



SEZIONE VERTICALE A-A

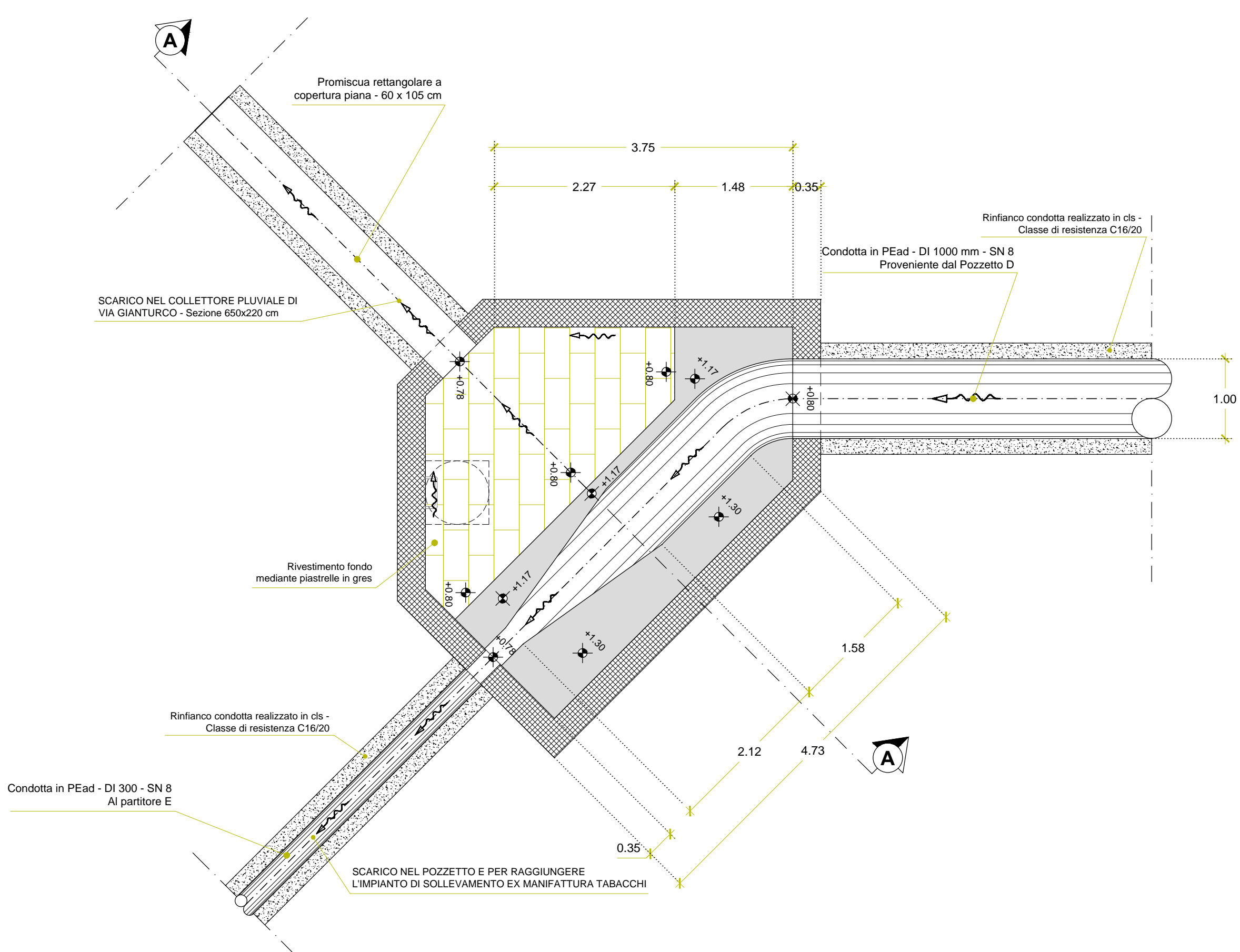
Scale 1:50



MANUFATTO PARTITORE POZZETTO E1

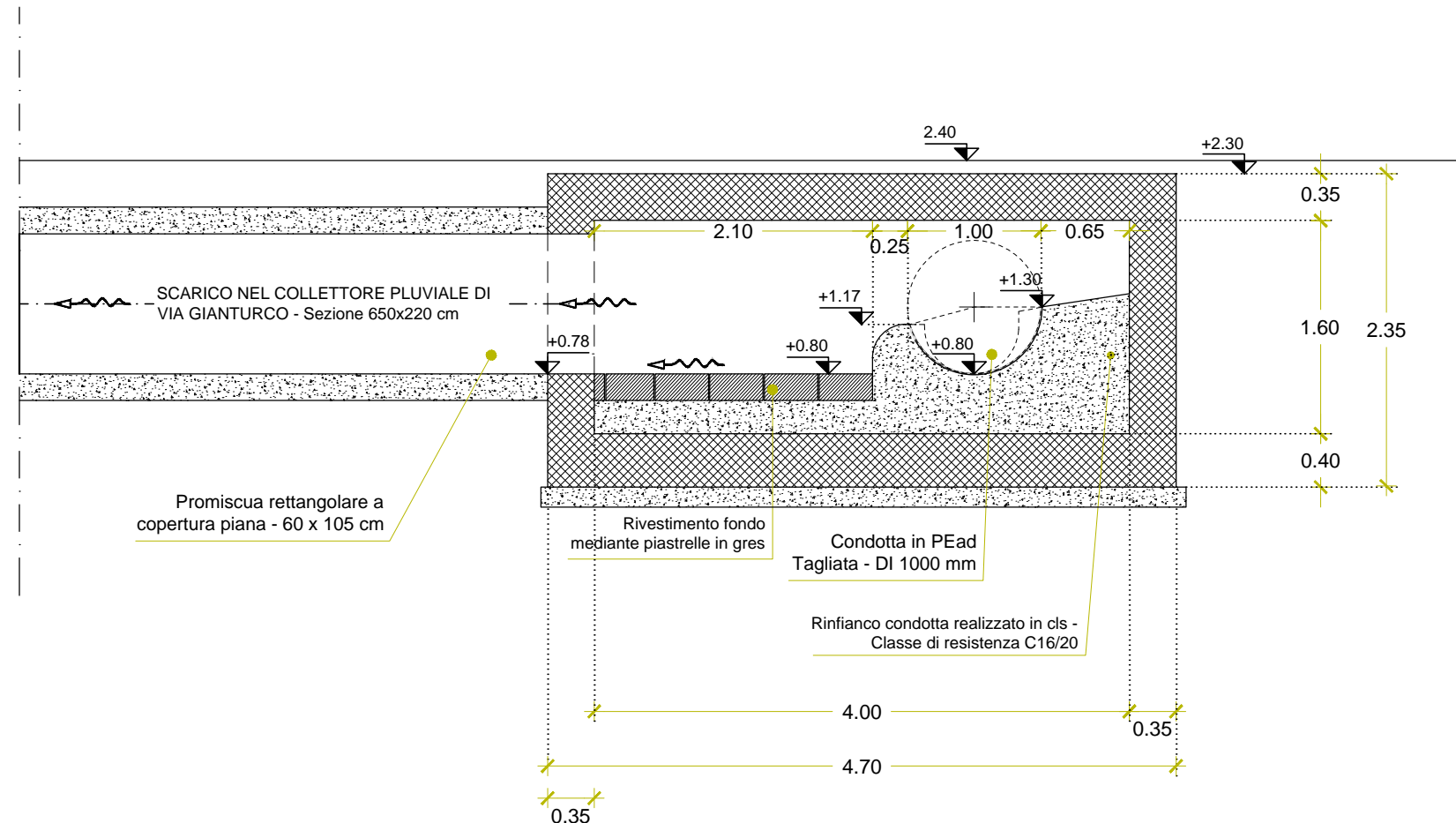
PLANIMETRIA CON VISTA QUOTE SCORRIMENTO

Scale 1:50



SEZIONE VERTICALE A-A

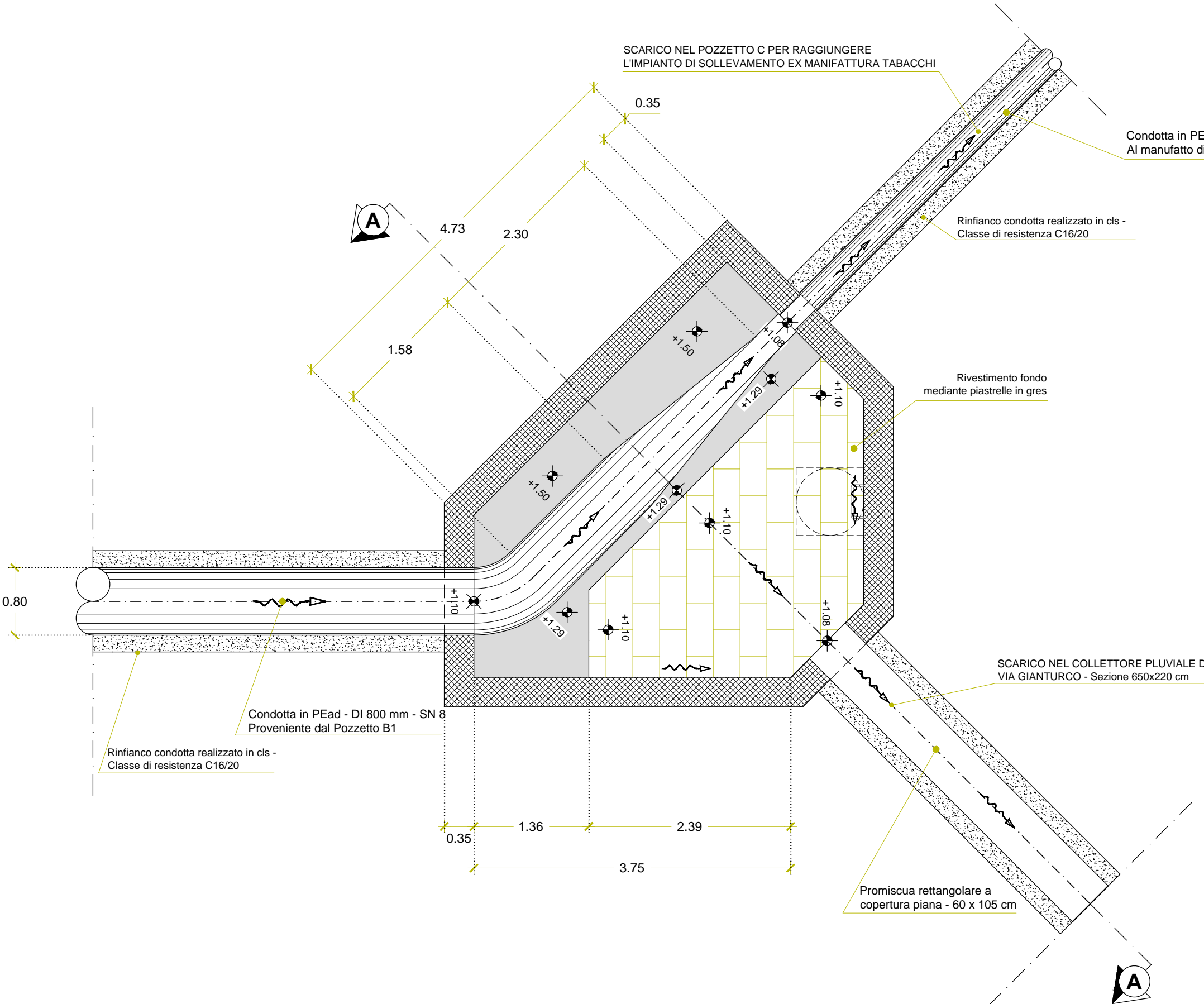
Scale 1:50



MANUFATTO PARTITORE POZZETTO C1

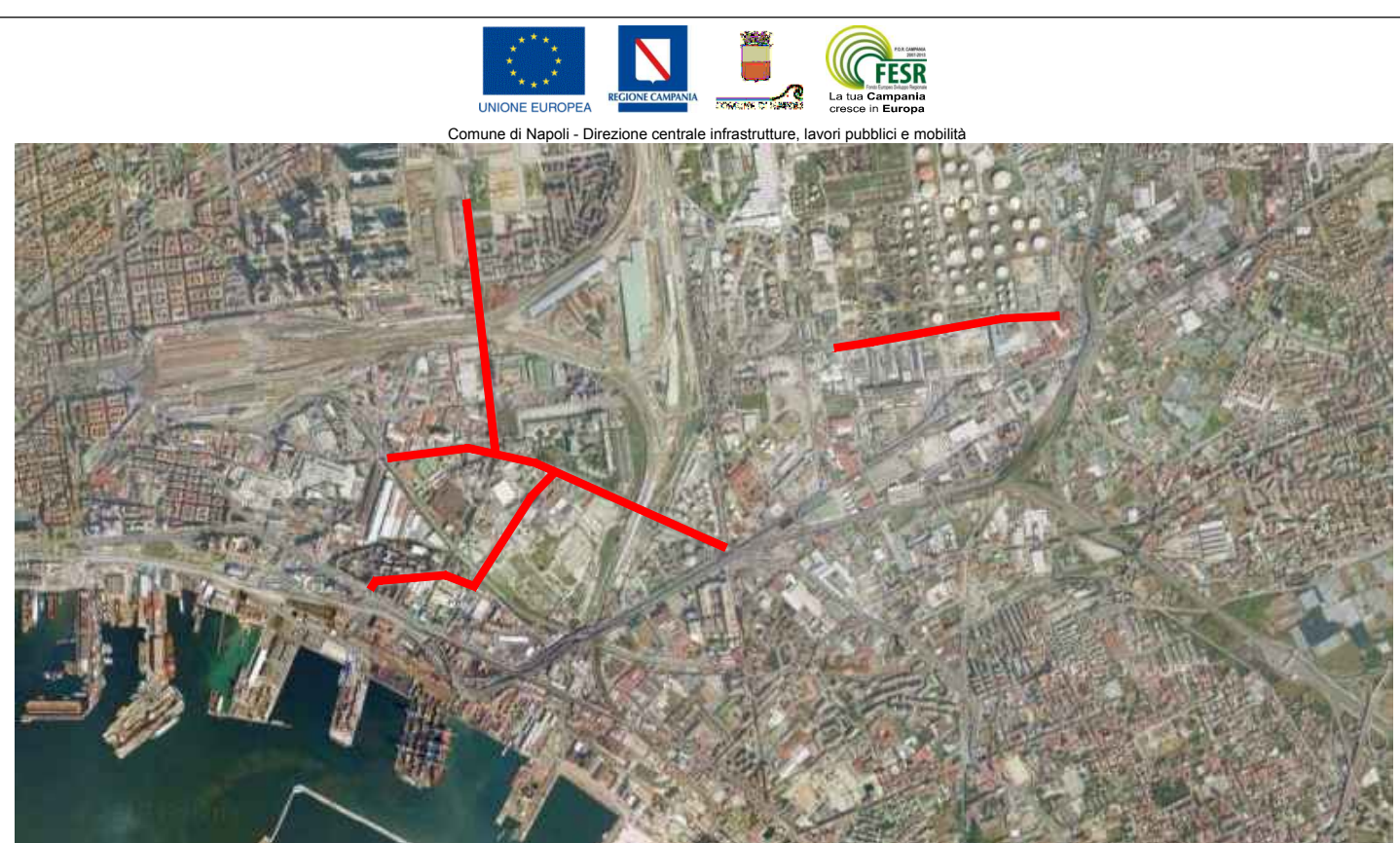
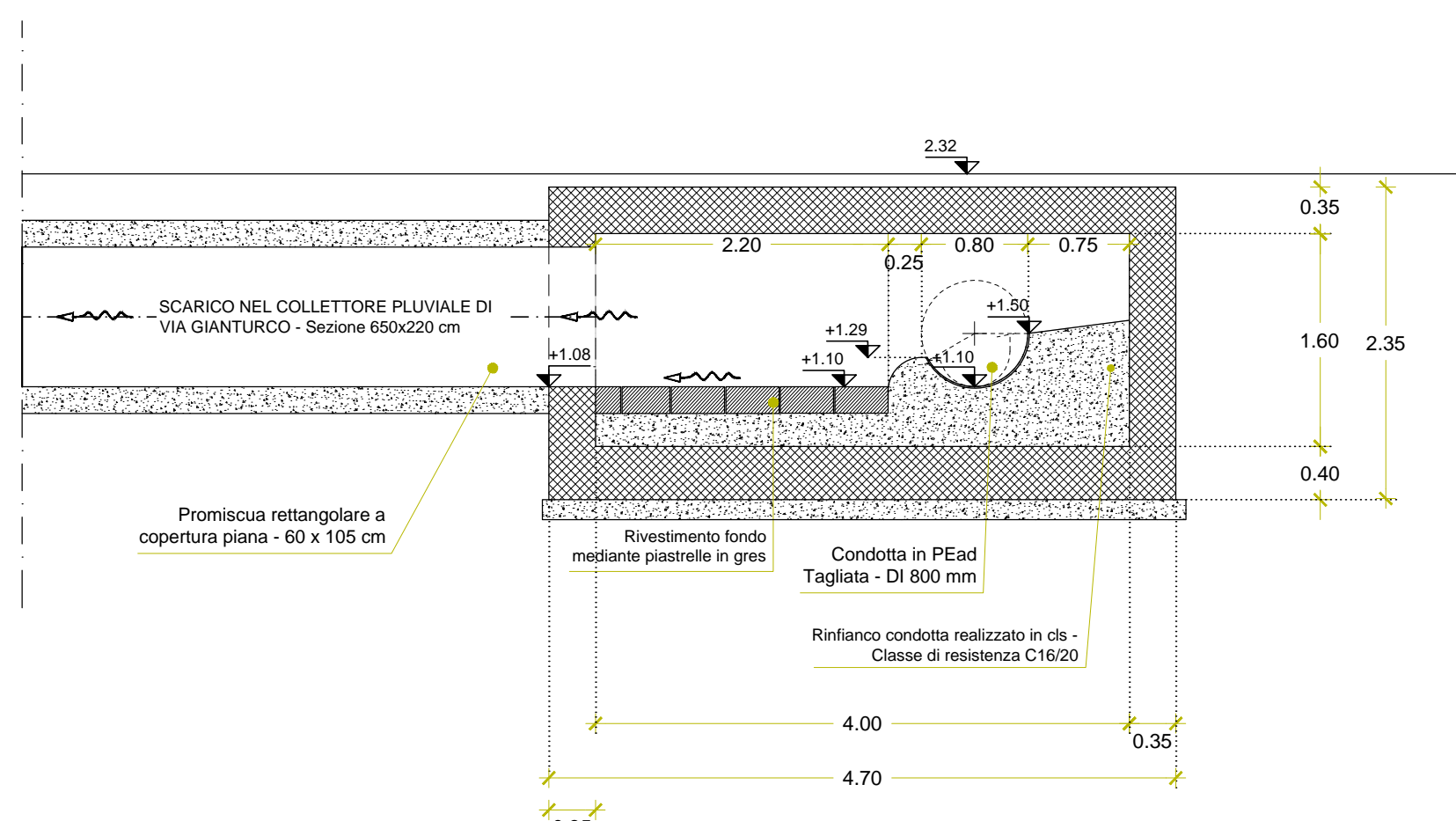
PLANIMETRIA CON VISTA QUOTE SCORRIMENTO

Scale 1:50


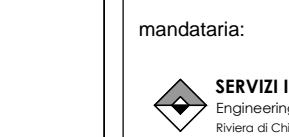



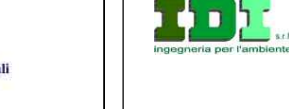


SEZIONE VERTICALE A-A

Scale 1:50



Progettazione esecutiva, previa acquisizione del progetto definitivo in sede di offerta, ed esecuzione dei Lavori di Riqualificazione urbanistica e ambientale di Via G. Ferraris - Via Brece a Sant'Erasmo - Via E. Gianuario - Via Nuova delle Brece

RESPONSABILE DEL PROCEDIMENTO: arch. Giuseppe Pelli		PROGETTISTA INDICATO: Confimark ATN s.r.l.	
CONCORDANTE:  FIER GESTIONI E APPALTI S.p.A.		MANDATARIO:  SEVERI INTRAMAS S.R.L.	
PROGETTISTA:  FIER GESTIONI E APPALTI S.p.A.		MANDATARIO:  SEVERI INTRAMAS S.R.L.	
ELABORATO:  ICoMES s.r.l.		MANDATARIO:  SEVERI INTRAMAS S.R.L.	

PROGETTO DEFINITIVO
BUSTA B) - OFFERTA TECNICA

ELABORATO:	TITOLO:	SCALA:
FOS	PROGETTO - IMPIANTO FOGNARIO POZZETTI PARTITORI	1:50
REVISIONE:	DATA:	FORMATO:
1	05.11.14	A0
2	Addebiatamento nella Comune di Hapital Prol. POU2014/001160 del 17.10.2014	ARGENTINO
3		410x570